

- Specifically designed for fibrous applications
- Wide pleat spacing and absence of outer liner permit thorough pulse cleaning
- Proprietary media blend of synthetic and glass fibers reduces pressure drop and increases airflow
- MERV\* 12 filtration efficiency rating per ASHRAE 52.2-2007
- Very good chemical tolerance

## APPLICATIONS

- Specifically designed for fibrous dusts of  $>10\ \mu\text{m}$  particulate
- Applications include:
  - woodworking
  - grain handling
  - composite grinding
  - textiles
  - fiberglass

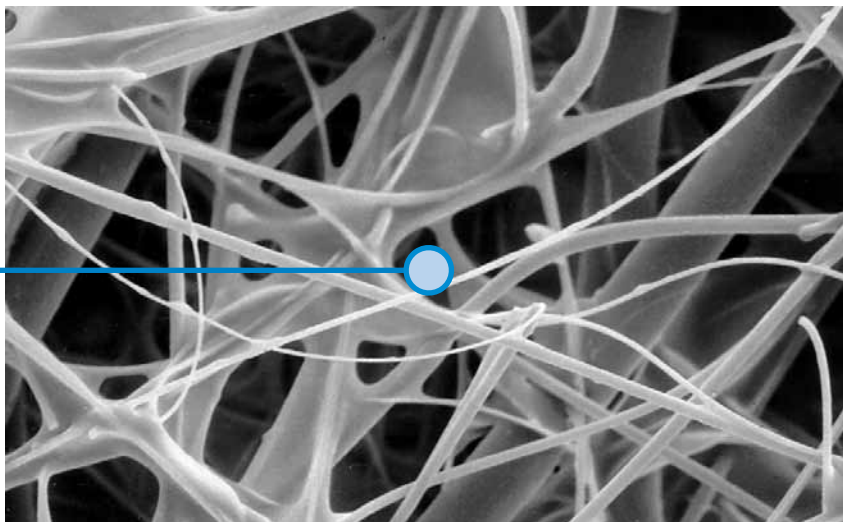


Ultra-Tek® Cartridge

## SEM† IMAGES

1 micron = 1/25,400 of an inch (1/1000 of a millimeter)

10 micron



Ultra-Tek Media (600x)

† Scanning Electron Microscope

\* Refer to Minimum Efficiency Reporting Value on page 2.

## SPECIFICATIONS

MEDIA COMPOSITION	
Substrate	Proprietary blend of synthetic and glass fibers with an average diameter of 12.0 µm

CARTRIDGE CONSTRUCTION	
Standard Construction	Galvanized expanded metal liner 60% open area  Optional stainless steel liner and end caps Urethane gasket Galvanized metal end caps No outer liner
Options	Stainless steel liner and caps

MEDIA COMPATIBILITY DATA	
Temperature Resistance	180°F / 82°C
Moisture Absorption**	Maximum 0.5% @ 70°F (21°C) and 65% RH
Chemical Tolerance***	Acids→Good      Oxidants→Fair Bases→Good      Solvents→Good
Abrasion Resistance	Good per TAPPI 476 (Taber Method)

MEDIA EFFICIENCY	
U.S. Efficiency Rating	MERV* 12 per ASHRAE 52.2-2007

## CONFIGURATIONS

Models	Filtration Area		Dimensions		Ultra-Tek	Ultra-Tek Stainless Steel
	ft <sup>2</sup>	m <sup>2</sup>	in	mm		
Bin Vent (TBV)	110	10.2	12.74 x 26	323.6 x 660	•	
Downflo® (DF)	110	10.2	12.74 x 26	323.6 x 660	•	•
Downflo II (DFT)	120	11.2	13.84 x 26	351.5 x 660	•	•
Downflo Oval (DFO)	89	8.3	11.4 x 14.4 x 26	290 x 356 x 660	•	
Downflo WorkStation (DWS)	89	8.3	11.4 x 14.4 x 26	290 x 356 x 660	•	
Downflo (SDF)	55	5.1	9.20 x 22.3	234 x 566	•	
Downflo Containment System (DCS)	69	6.4	11.4 x 14.4 x 26	290 x 356 x 660	•	
Environmental Control Booth (ECB)	110	10.2	12.74 x 26	323.6 x 660	•	
ProBooth™	110	10.2	12.74 x 26	323.6 x 660	•	
TD Large	110	10.2	12.74 x 26	323.6 x 660	•	
TD Small	43	3.9	7.90 x 16	200 x 406	•	

\* The Minimum Efficiency Reporting Value (MERV) of this filter cartridge has been determined through independent laboratory testing using ASHRAE 52.2 (2007) test standards. The MERV rating was determined at a face velocity of 118 feet per minute (36.0 meters per minute) and loading up to four inches (101.6 millimeters) water gauge. Actual efficiency of any filter cartridge will vary according to the specific application parameters. Dust concentration, airflow, particle characteristics, and pulse cleaning methods all affect filtration efficiency.

\*\* Environmental conditions involving combinations of high temperature, corrosive material, and moisture can reduce media strength. Reduction in media strength may compromise cartridge integrity and performance.

\*\*\* A combination of chemicals may alter fiber resistance to the specified performance level. Chemical attack may compromise cartridge integrity and performance.

Significantly improve the performance of your collector with genuine Donaldson Torit replacement filters and parts. **Call Donaldson Torit today 800-365-1331.**



Tel 800-365-1331 (USA)  
Tel 800-343-3639 (within Mexico)  
[donaldsontorit@donaldson.com](mailto:donaldsontorit@donaldson.com)  
[donaldsontorit.com](http://donaldsontorit.com)  
  
Donaldson Company, Inc.  
Torit  
P.O. Box 1299  
Minneapolis, MN  
55440-1299 U.S.A.

**EXACTLY WHAT YOU NEED.™**

**Ultra-Tek Cartridge (11/12)**  
© 1991 Donaldson Co., Inc. All Rights Reserved. All products, product specifications, and data (airflow, capacity, dimensions, or availability) are subject to change without notice, and may vary by region or country. Donaldson Torit, Ultra-Tek, and the color blue are registered trademarks of Donaldson Company, Inc. Contains Donaldson proprietary technology.